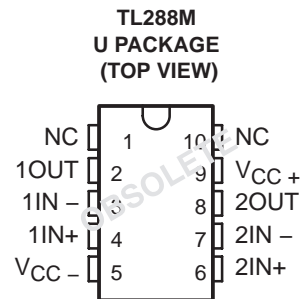
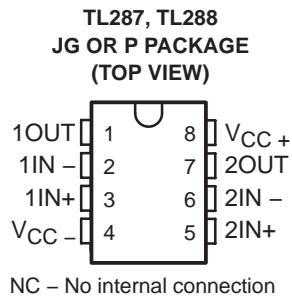
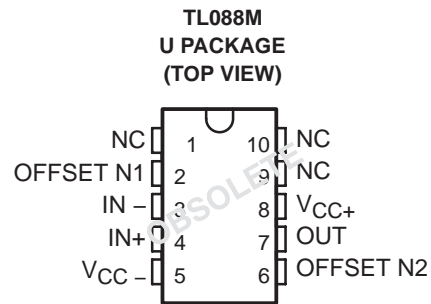
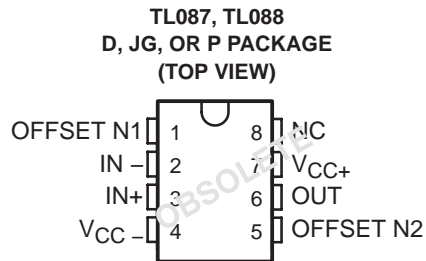


TL087, TL088, TL287, TL288 JFET-INPUT OPERATIONAL AMPLIFIERS

The TL087, TL088, and TL287 are obsolete and are no longer supplied.

SLOS082B – MARCH 1979 REVISED – JULY 2004

- Low Input Offset Voltage . . . 0.5 mV Max
- Low Power Consumption
- Wide Common-Mode and Differential Voltage Ranges
- Low Input Bias and Offset Currents
- High Input Impedance . . . JFET-Input Stage
- Internal Frequency Compensation
- Latch-Up-Free Operation
- High Slew Rate . . . 18 V/ μ s Typ
- Low Total Harmonic Distortion 0.003% Typ



description/ordering information

These JFET-input operational amplifiers incorporate well-matched high-voltage JFET and bipolar transistors in a monolithic integrated circuit. They feature low input offset voltage, high slew rate, low input bias and offset currents, and low temperature coefficient of input offset voltage. Offset-voltage adjustment is provided for the TL087 and TL088.

The C-suffix devices are characterized for operation from 0°C to 70°C, and the I-suffix devices are characterized for operation from –40°C to 85°C. The M-suffix devices are characterized for operation over the full military temperature range of –55°C to 125°C.

ORDERING INFORMATION

TA	TYPE	V _{IO} MAX AT 25°C	PACKAGE†		ORDERABLE PART NUMBER	TOP-SIDE MARKING
0°C to 70°C	Dual	1 mV	PDIP (P)	Tube of 50	TL288CP	TL288CP

† Package drawings, standard packing quantities, thermal data, symbolization, and PCB design guidelines are available at www.ti.com/sc/package.



Please be aware that an important notice concerning availability, standard warranty, and use in critical applications of Texas Instruments semiconductor products and disclaimers thereto appears at the end of this data sheet.

PRODUCTION DATA information is current as of publication date. Products conform to specifications per the terms of Texas Instruments standard warranty. Production processing does not necessarily include testing of all parameters.

**TEXAS
INSTRUMENTS**

POST OFFICE BOX 655303 • DALLAS, TEXAS 75265

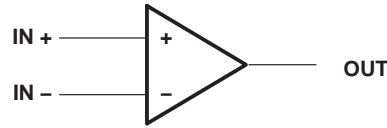
Copyright © 2004, Texas Instruments Incorporated

TL087, TL088, TL287, TL288 JFET-INPUT OPERATIONAL AMPLIFIERS

The TL087, TL088, and TL287 are obsolete and are no longer supplied.

SLOS082B – MARCH 1979 REVISED – JULY 2004

symbol (each amplifier)



absolute maximum ratings over operating free-air temperature range (unless otherwise noted)

	TL088M TL288M	TL087I TL088I TL287I TL288I	TL087C TL088C TL287C TL288C	UNIT
Supply voltage, V_{CC+} (see Note 1)	18	18	18	V
Supply voltage, V_{CC-} (see Note 1)	-18	-18	-18	V
Differential input voltage (see Note 2)	± 30	± 30	± 30	V
Input voltage (see Notes 1 and 3)	± 15	± 15	± 15	V
Input current, I_I (each Input)	± 1	± 1	± 1	mA
Output current, I_O (each output)	± 80	± 80	± 80	mA
Total V_{CC+} terminal current	160	160	160	mA
Total V_{CC-} terminal current	-160	-160	-160	mA
Duration of output short circuit (see Note 4)	Unlimited	Unlimited	Unlimited	
Continuous total dissipation	See Dissipation Rating Table			
Maximum junction temperature, T_J		150	150	$^{\circ}\text{C}$
Package thermal impedance, θ_{JA} (see Notes 5 and 6)	P package	85	85	$^{\circ}\text{C}/\text{W}$
Lead temperature 1,6 mm (1/16 inch) from case for 60 seconds	JG or U package	300	300	$^{\circ}\text{C}$
Storage temperature range, T_{Stg}	-65 to 150	-65 to 150	-65 to 150	$^{\circ}\text{C}$

- NOTES: 1. All voltage values, except differential voltages, are with respect to the midpoint between V_{CC+} and V_{CC-} .
2. Differential voltages are at the noninverting input terminal with respect to the inverting input terminal.
3. The magnitude of the input voltage must never exceed the magnitude of the supply voltage or 15 V, whichever is less.
4. The output may be shorted to ground or to either supply. Temperature and/or supply voltages must be limited to ensure that the dissipation rating is not exceeded.
5. Maximum power dissipation is a function of $T_J(\text{max})$, θ_{JA} , and T_A . The maximum allowable power dissipation at any allowable ambient temperature is $PD = (T_J(\text{max}) - T_A)/\theta_{JA}$. Operating at the absolute maximum T_J of 150°C can affect reliability.
6. The package thermal impedance is calculated in accordance with JESD 51-7.
7. The output may be shorted to ground or to either supply. Temperature and/or supply voltages must be limited to ensure that the dissipation rating is not exceeded.
8. Maximum power dissipation is a function of $T_J(\text{max})$, θ_{JA} , and T_A . The maximum allowable power dissipation at any allowable ambient temperature is $PD = (T_J(\text{max}) - T_A)/\theta_{JA}$. Operating at the absolute maximum T_J of 150°C can affect reliability.
9. The package thermal impedance is calculated in accordance with JESD 51-7.

DISSIPATION RATING TABLE

PACKAGE	$T_A \leq 25^{\circ}\text{C}$ POWER RATING	DERATING FACTOR ABOVE $T_A = 25^{\circ}\text{C}$	$T_A = 70^{\circ}\text{C}$ POWER RATING	$T_A = 85^{\circ}\text{C}$ POWER RATING	$T_A = 125^{\circ}\text{C}$ POWER RATING
JG	1050 mW	8.4 mW/ $^{\circ}\text{C}$	672 mW	546 mW	210 mW
U	675 mW	5.4 mW/ $^{\circ}\text{C}$	432 mW	351 mW	135 mW

The TL087, TL088, and TL287 are obsolete and are no longer supplied.

SLOS082B – MARCH 1979 REVISED – JULY 2004

recommended operating conditions

		C-SUFFIX		I-SUFFIX		M-SUFFIX		UNIT	
		MIN	MAX	MIN	MAX	MIN	MAX		
V _{CC}	Supply voltage	±5	±5	±5	±5	±5	±15	V	
V _{IC}	Common-mode input voltage	V _{CC±} = ±5 V	-1	4	-1	4	-1	4	V
		V _{CC±} = ±15 V	-11	11	-11	11	-11	11	
V _I	Input voltage	V _{CC±} = ±5 V	-1	4	-1	4	-1	4	V
		V _{CC±} = ±15 V	-11	11	-11	11	-11	11	
T _A	Operating free-air temperature	0	70	-40	85	-55	125	°C	

operating characteristics V_{CC} = ±15 V, T_A = 25°C

PARAMETER		TEST CONDITIONS		TL088M, TL288M			TL087I, TL087C TL088I, TL088C			UNIT
				MIN	TYP	MAX	MIN	TYP	MAX	
SR	Slew rate at unity gain	V _I = 10 V, C _L = 100 pF,	R _L = 2 kΩ, A _{VD} = 1		18		8	18	V/μs	
t _r	Rise time	V _I = 20 mV,	R _L = 2 kΩ,		55		55		ns	
	Overshoot factor	C _L = 100 pF,	A _{VD} = 1		25		25		%	
V _N	Equivalent input noise voltage	R _S = 100 Ω,	f = 1 kHz		19		19		nV/√Hz	

TL087, TL088, TL287, TL288 JFET-INPUT OPERATIONAL AMPLIFIERS

SLOS082B – MARCH 1979 – REVISED – JULY 2004

electrical characteristics, $V_{CC\pm} = \pm 15\text{ V}$

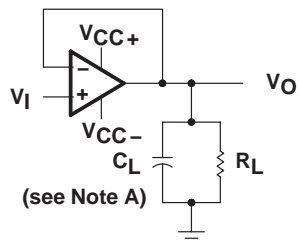
PARAMETER	TEST CONDITIONS†		TL088M		TL087I		TL087C		UNIT
			MIN	TYP	MAX	MIN	TYP	MAX	
V_{IO} Input offset voltage	$R_S = 50\ \Omega$, $V_O = 0$ $T_A = 25^\circ\text{C}$	TL087, TL287			0.1	0.5	0.1	0.5	mV
		TL088, TL288	0.1	3	0.1	1	0.1	1	
	$R_S = 50\ \Omega$, $V_O = 0$, $T_A = \text{full range}$	TL087, TL287 TL088, TL288			2	3	1.5	2.5	
$\alpha_{V_{IO}}$ Temperature coefficient of input offset voltage	$R_S = 50\ \Omega$, $T_A = 25^\circ\text{C}$ to MAX		10		8		8	$\mu\text{V}/^\circ\text{C}$	
I_{IO} Input offset current	$T_A = 25^\circ\text{C}$		5		5		5	100	pA
	$T_A = \text{full range}$			25				2	nA
	$T_A = 25^\circ\text{C}$		30		30		30	200	pA
	$T_A = \text{full range}$			100		20		7	nA
V_{ICR} Common-mode input voltage range	$T_A = 25^\circ\text{C}$		(V_{CC-}) + 4 to (V_{CC+}) - 4		(V_{CC-}) + 4 to (V_{CC+}) - 4		(V_{CC-}) + 4 to (V_{CC+}) - 4		V
	$T_A = 25^\circ\text{C}$, $R_L \geq 10\ \text{k}\Omega$		24	27	24	27	24	27	V
$V_O(\text{PP})$ Maximum-peak-to-peak output voltage swing	$T_A = \text{full range}$		24		24		24		V
	$R_L \geq 2\ \text{k}\Omega$, $T_A = 25^\circ\text{C}$		20		20		20		V
	$R_L \geq 2\ \text{k}\Omega$, $T_A = 25^\circ\text{C}$, $V_O = \pm 10\ \text{V}$		50	105	50	105	50	105	V/mV
A_{VD} Large-signal differential voltage amplification	$R_L \geq 2\ \text{k}\Omega$, $T_A = \text{full range}$		25		25		25		V/mV
	$T_A = 25^\circ\text{C}$		3		3		3		MHz
B_1 Unity-gain bandwidth	$T_A = 25^\circ\text{C}$		1012		1012		1012		Ω
r_i Input resistance	$T_A = 25^\circ\text{C}$		80	93	80	93	80	93	dB
	$R_S = 50\ \Omega$, $V_O = 0\ \text{V}$, $V_{IC} = V_{ICR}\ \text{min}$, $T_A = 25^\circ\text{C}$		80	99	80	99	80	99	dB
CMRR Common-mode rejection ratio	$R_S = 50\ \Omega$, $V_O = 0\ \text{V}$, $V_{CC\pm} = \pm 9\ \text{V}$ to $\pm 15\ \text{V}$, $T_A = 25^\circ\text{C}$		80	99	80	99	80	99	dB
kSVR Supply voltage rejection ratio ($\Delta V_{CC} \pm \Delta V_{IO}$)	No load, $T_A = 25^\circ\text{C}$		26	2.8	26	2.8	26	2.8	mA

† All characteristics are measured under open-loop conditions with zero common-mode input voltage, unless otherwise specified. Full range for T_A is -55°C to 125°C for TL_88M; -40°C to 85°C for TL_8_I; and 0°C to 70°C for TL_8_C.

‡ Input bias currents of an FET-input operational amplifier are normal junction reverse currents, which are temperature sensitive. Pulse techniques must be used that will maintain the junction temperature as close to the ambient temperature as possible.



PARAMETER MEASUREMENT INFORMATION



NOTE A: C_L includes fixture capacitance.

Figure 1. Slew Rate, Rise/Fall Time, and Overshoot Test Circuit

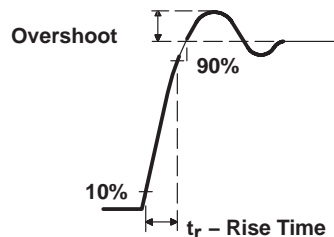


Figure 2. Rise Time and Overshoot Waveform

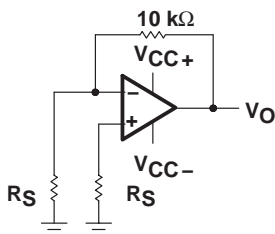
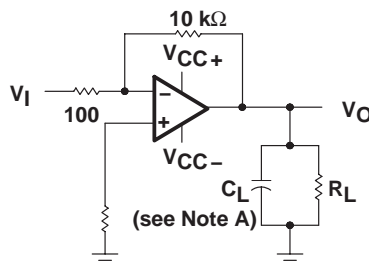


Figure 3. Noise Voltage Test Circuit



NOTE A: C_L includes fixture capacitance.

Figure 4. Unity-Gain Bandwidth and Phase Margin Test Circuit

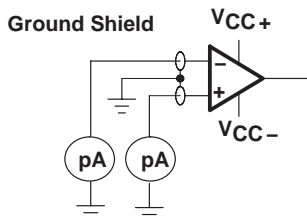


Figure 5. Input Bias and Offset Current Test Circuit

TL087, TL088, TL287, TL288

JFET-INPUT OPERATIONAL AMPLIFIERS

SLOS082B – MARCH 1979 – REVISED – JULY 2004

typical values

Typical values as presented in this data sheet represent the median (50% point) of device parametric performance.

input bias and offset current

At the picoamp bias current level typical of these JFET operational amplifiers, accurate measurement of the bias current becomes difficult. Not only does this measurement require a picoammeter, but test socket leakages can easily exceed the actual device bias currents. To accurately measure these small currents, Texas Instruments uses a two-step process. The socket leakage is measured using picoammeters with bias voltages applied, but with no device in the socket. The device then is inserted in the socket and a second test that measures both the socket leakage and the device input bias current is performed. The two measurements then are subtracted algebraically to determine the bias current of the device.



POST OFFICE BOX 655303 • DALLAS, TEXAS 75265

TYPICAL CHARACTERISTICS

table of graphs

		FIGURE	
$\alpha_{V_{IO}}$	Temperature coefficient of input offset voltage	Distribution	6, 7
I_{IO}	Input offset current	vs Temperature	8
I_{IB}	Input bias current	vs V_{IC}	9
		vs Temperature	8
V_I	Common-mode input voltage range limits	vs V_{CC}	10
		vs Temperature	11
V_{ID}	Differential input voltage	vs Output voltage	12
V_{OM}	Maximum peak output voltage swing	vs V_{CC}	13
		vs Output current	17
		vs Frequency	14, 15, 16
		vs Temperature	18
A_{VD}	Differential voltage amplification	vs R_L	19
		vs Frequency	20
		vs Temperature	21
z_o	Output impedance	vs Frequency	24
CMRR	Common-mode rejection ratio	vs Frequency	22
		vs Temperature	23
k_{SVR}	Supply-voltage rejection ratio	vs Temperature	25
I_{OS}	Short-circuit output current	vs V_{CC}	26
		vs Time	27
		vs Temperature	28
I_{CC}	Supply current	vs V_{CC}	29
		vs Temperature	30
SR	Slew rate	vs R_L	31
		vs Temperature	32
	Overshoot factor	vs C_L	33
V_n	Equivalent input noise voltage	vs Frequency	34
THD	Total harmonic distortion	vs Frequency	35
B_1	Unity-gain bandwidth	vs V_{CC}	36
		vs Temperature	37
ϕ_m	Phase margin	vs V_{CC}	38
		vs C_L	39
		vs Temperature	40
	Phase shift	vs Frequency	20
	Pulse response	Small-signal	41
		Large-signal	42

TL087, TL088, TL287, TL288 JFET-INPUT OPERATIONAL AMPLIFIERS

SLOS082B – MARCH 1979 – REVISED – JULY 2004

TYPICAL CHARACTERISTICS†

**DISTRIBUTION OF TL088
INPUT OFFSET VOLTAGE
TEMPERATURE COEFFICIENT**

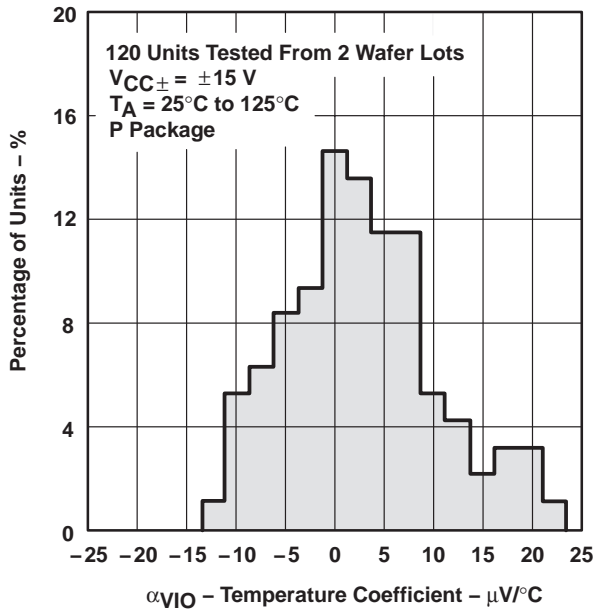


Figure 6

**DISTRIBUTION OF TL288
INPUT OFFSET VOLTAGE
TEMPERATURE COEFFICIENT**

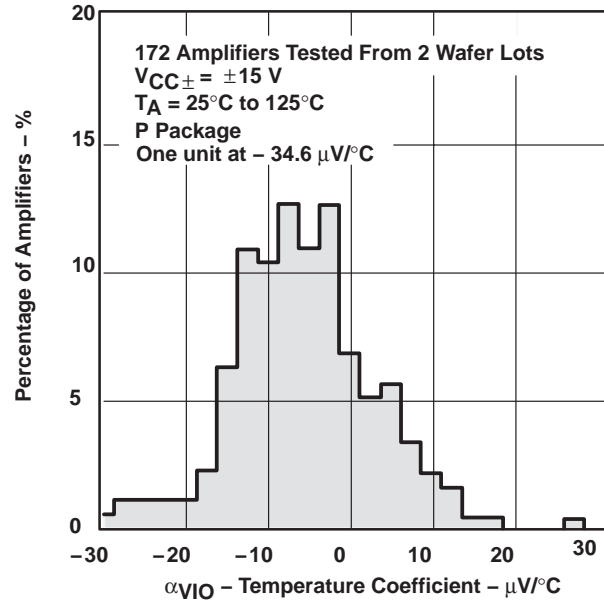


Figure 7

**INPUT BIAS CURRENT AND
INPUT OFFSET CURRENT
VS
FREE-AIR TEMPERATURE**

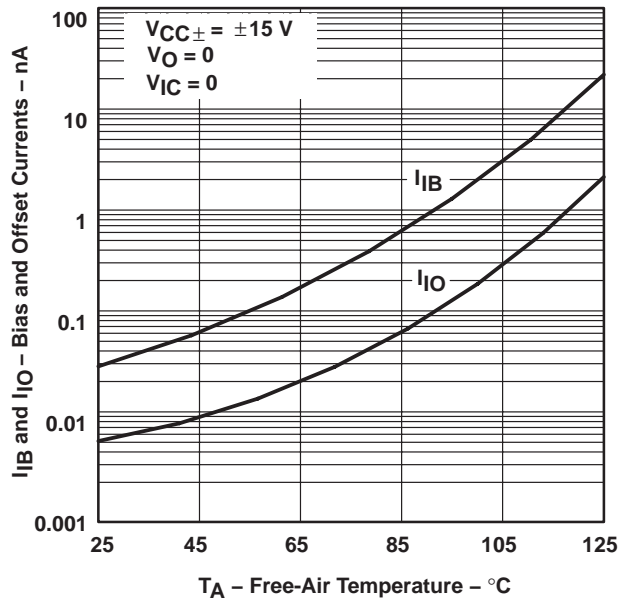


Figure 8

**INPUT BIAS CURRENT
VS
COMMON-MODE INPUT VOLTAGE**

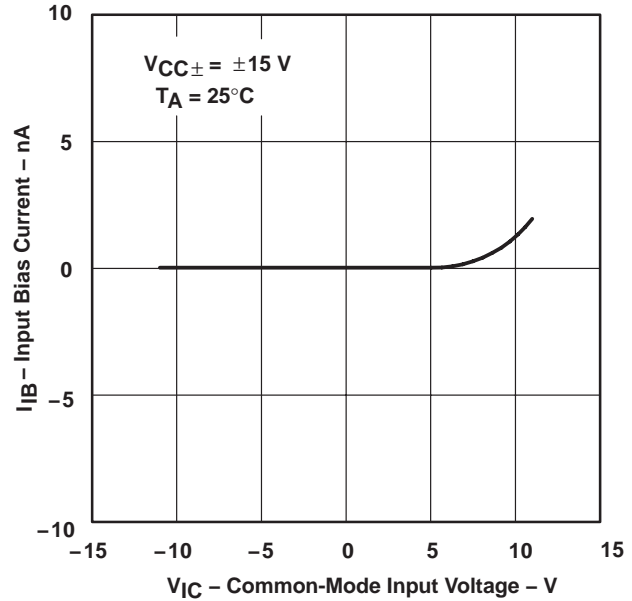
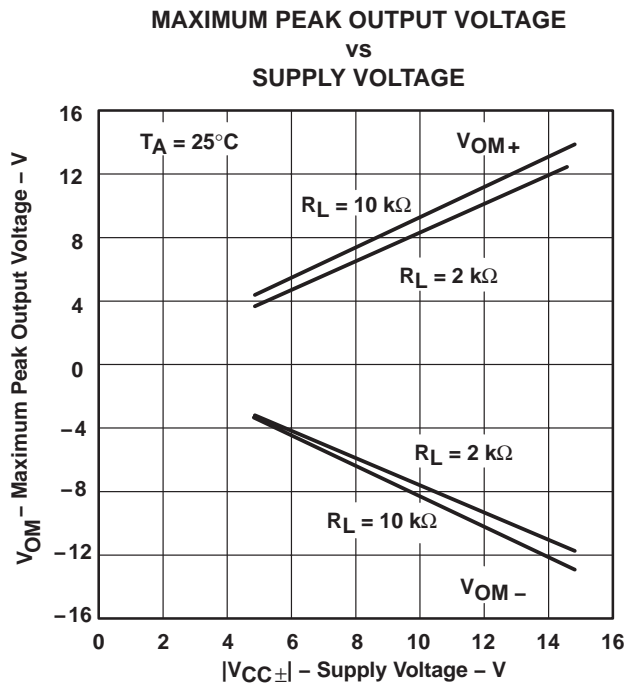
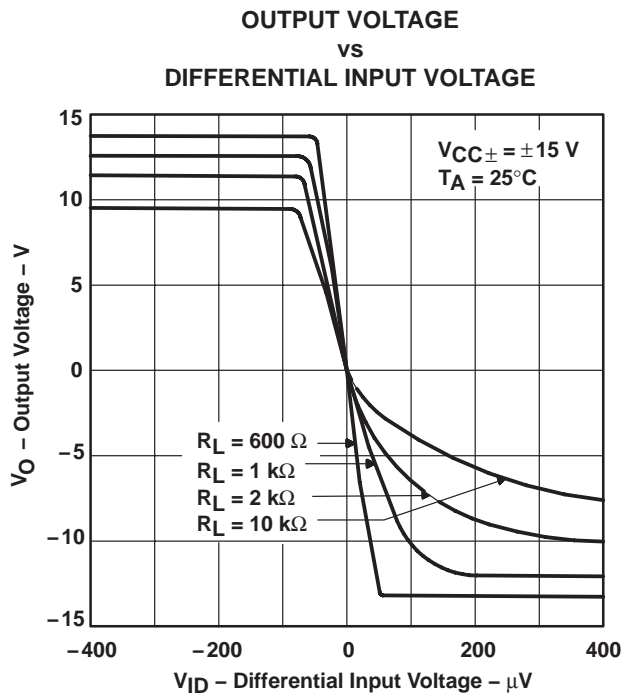
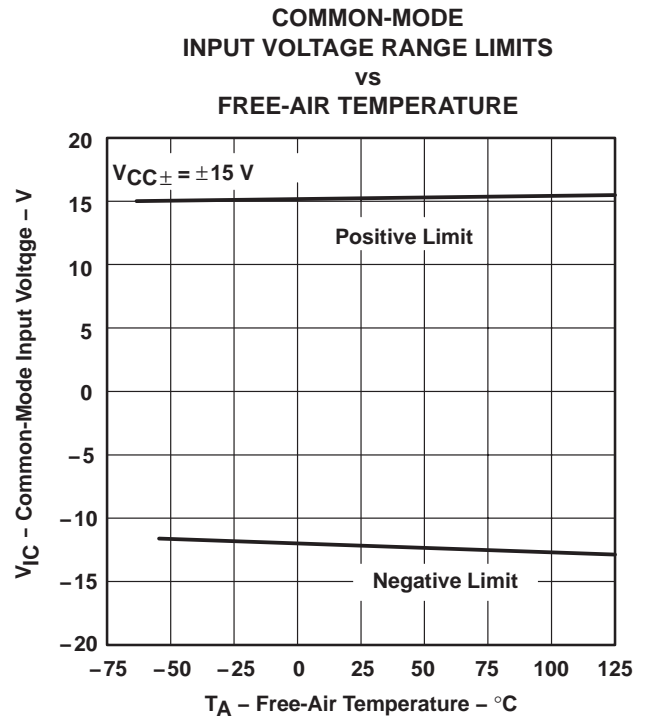
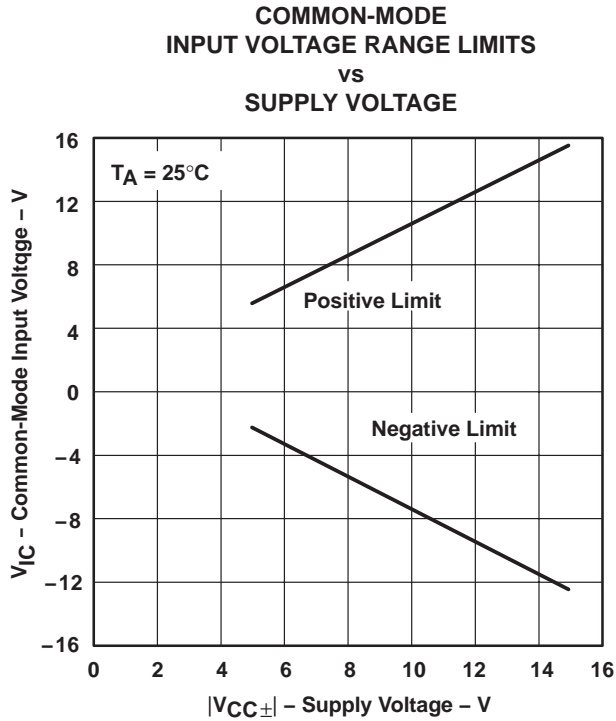


Figure 9

† Data at high and low temperatures are applicable within the rated operating free-air temperature ranges of the various devices.

TYPICAL CHARACTERISTICS†



† Data at high and low temperatures are applicable within the rated operating free-air temperature ranges of the various devices.

TL087, TL088, TL287, TL288 JFET-INPUT OPERATIONAL AMPLIFIERS

SLOS082B – MARCH 1979 – REVISED – JULY 2004

TYPICAL CHARACTERISTICS†

MAXIMUM PEAK-TO-PEAK OUTPUT VOLTAGE
vs
FREQUENCY

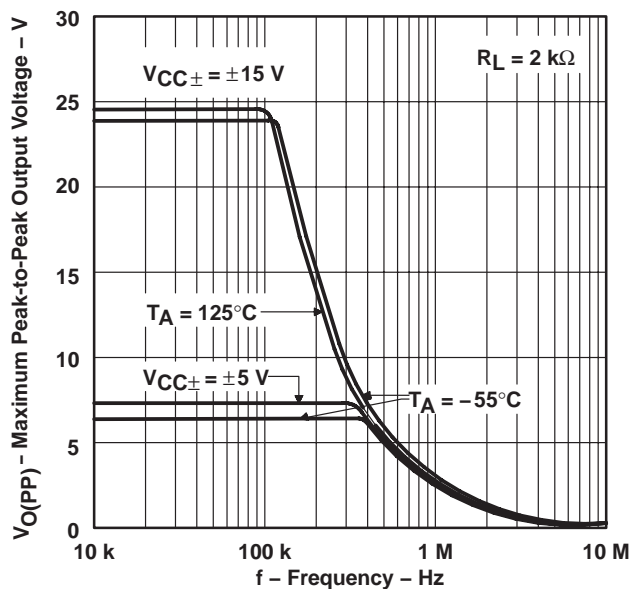


Figure 14

MAXIMUM PEAK-TO-PEAK OUTPUT VOLTAGE
vs
FREQUENCY

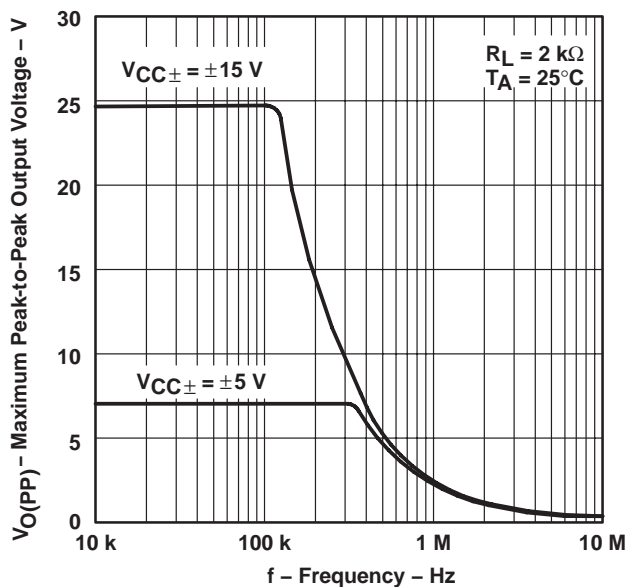


Figure 15

MAXIMUM PEAK-TO-PEAK OUTPUT VOLTAGE
vs
FREQUENCY

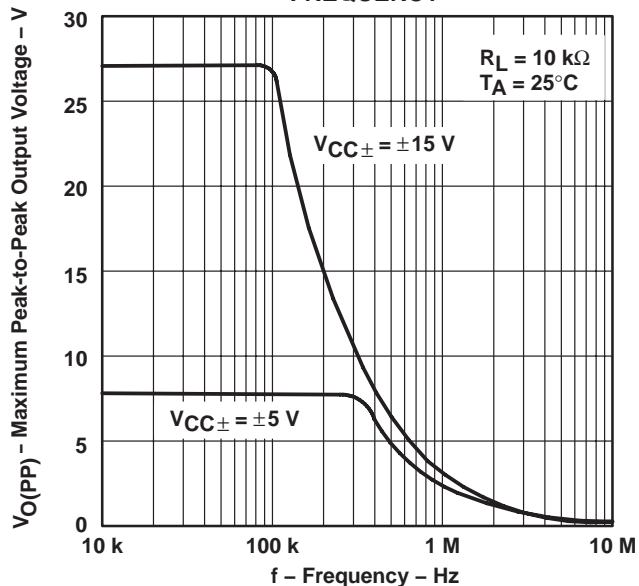


Figure 16

MAXIMUM PEAK OUTPUT VOLTAGE
vs
OUTPUT CURRENT

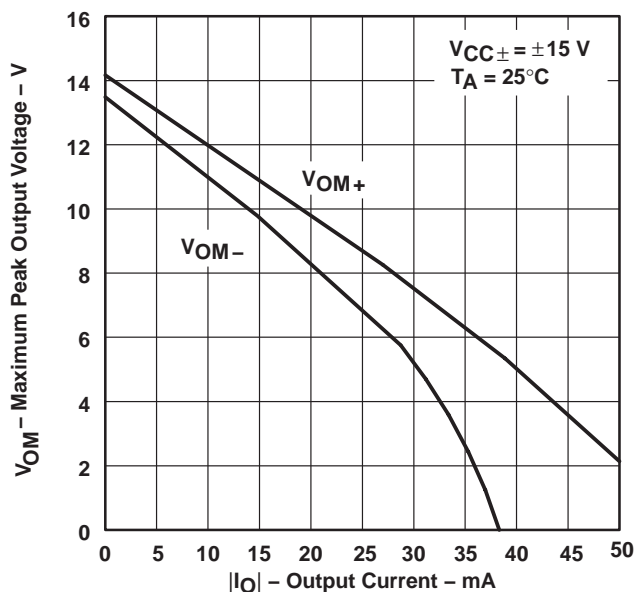


Figure 17

† Data at high and low temperatures are applicable within the rated operating free-air temperature ranges of the various devices.

TYPICAL CHARACTERISTICS†

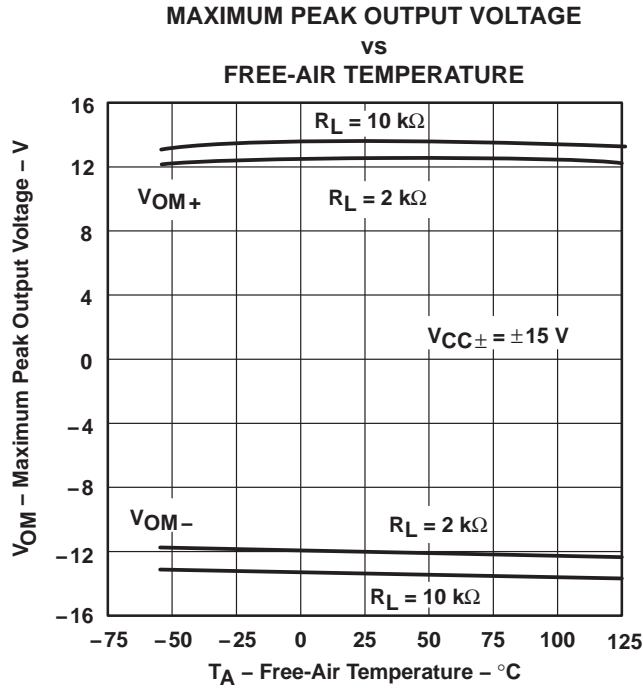


Figure 18

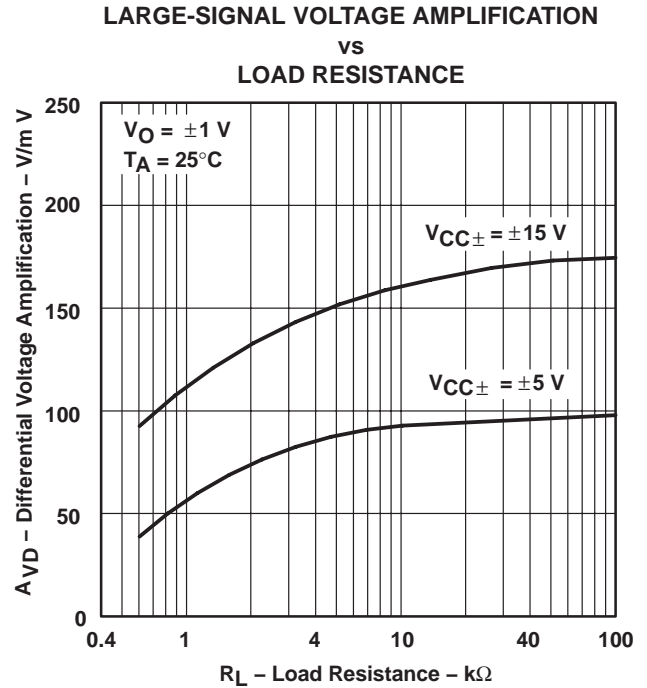


Figure 19

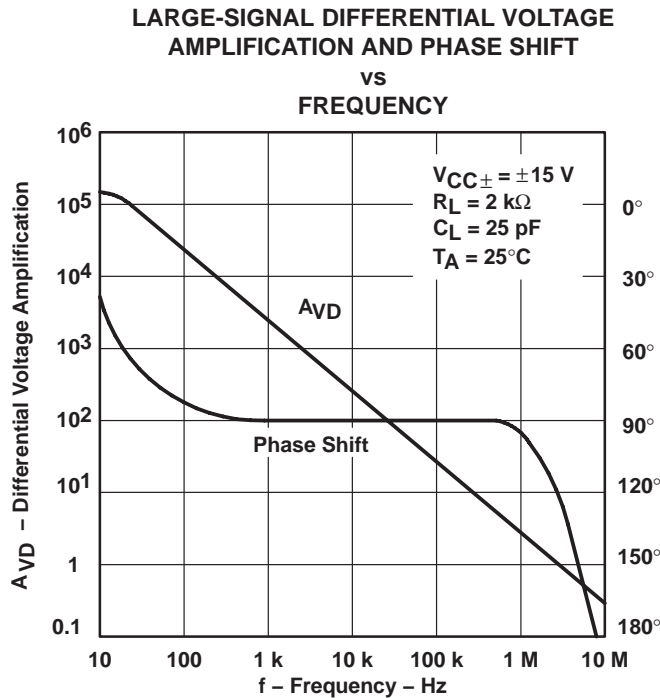


Figure 20

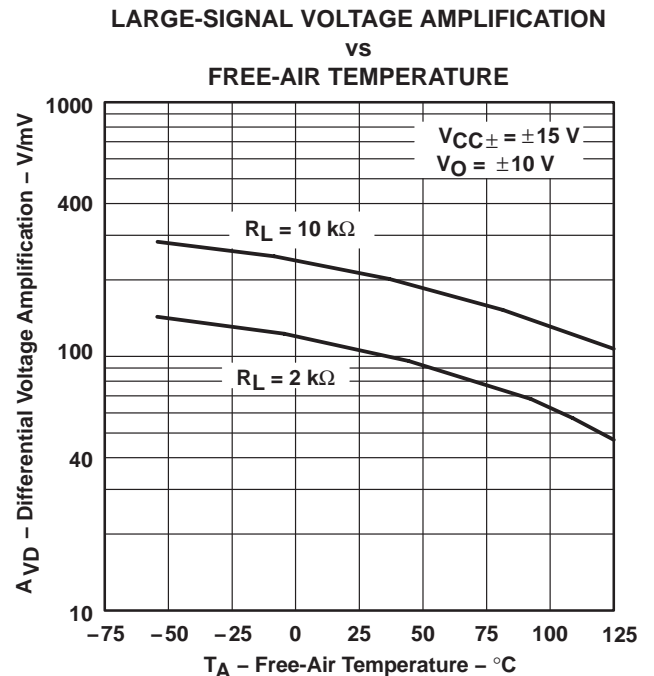


Figure 21

† Data at high and low temperatures are applicable within the rated operating free-air temperature ranges of the various devices.

TL087, TL088, TL287, TL288 JFET-INPUT OPERATIONAL AMPLIFIERS

SLOS082B – MARCH 1979 – REVISED – JULY 2004

TYPICAL CHARACTERISTICS†

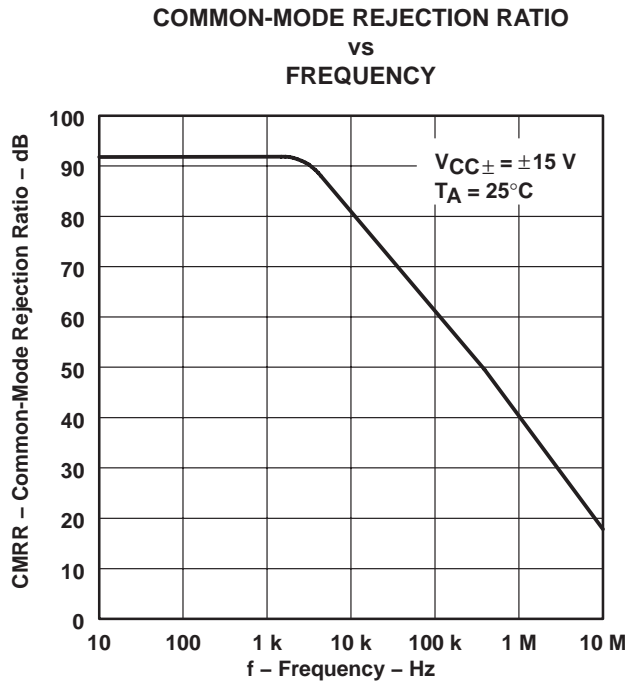


Figure 22

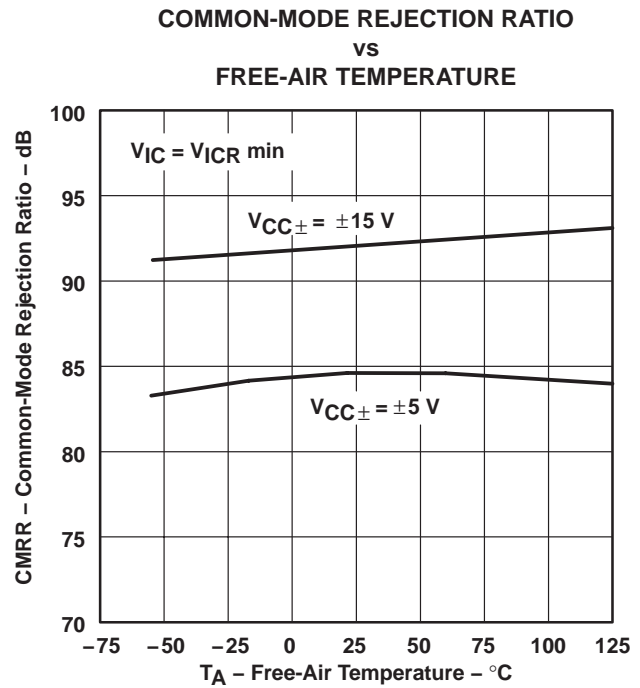


Figure 23

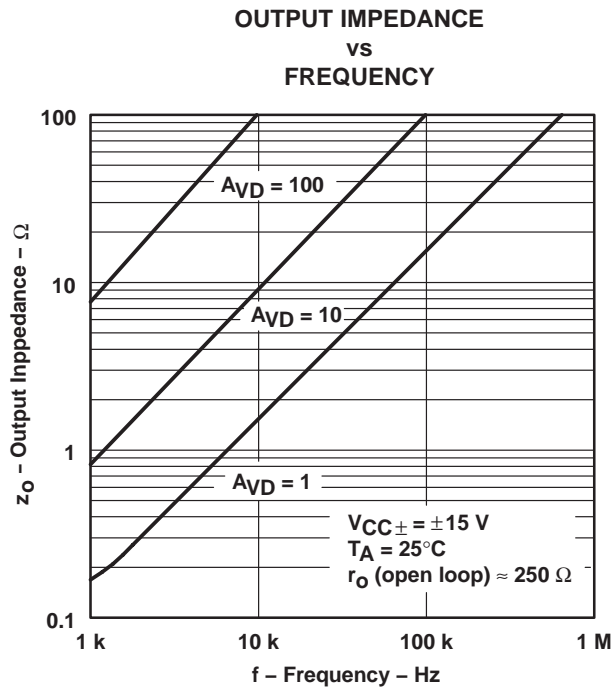


Figure 24

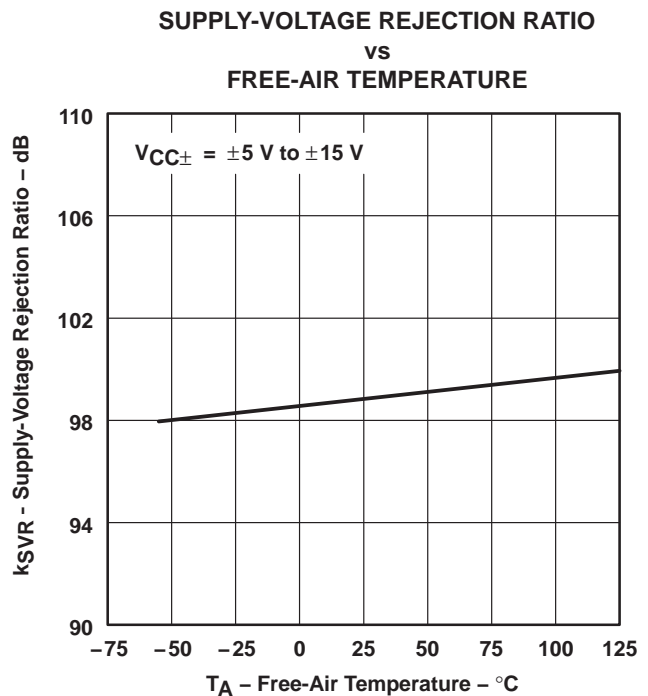
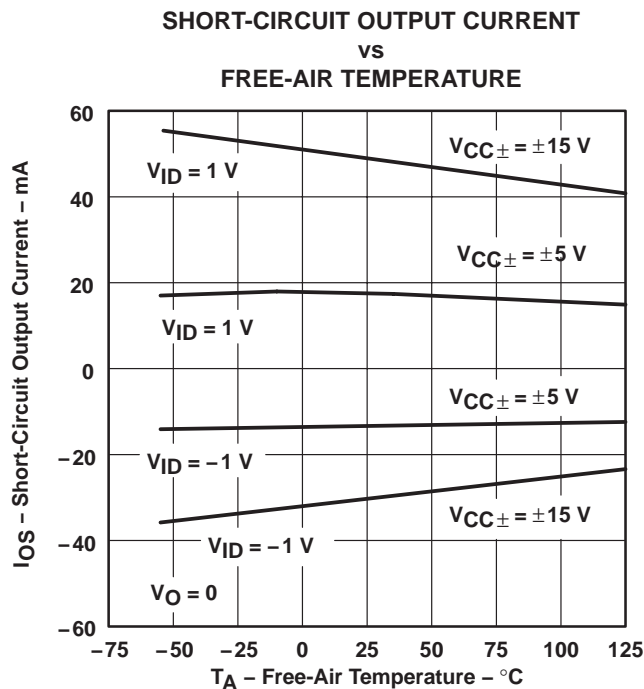
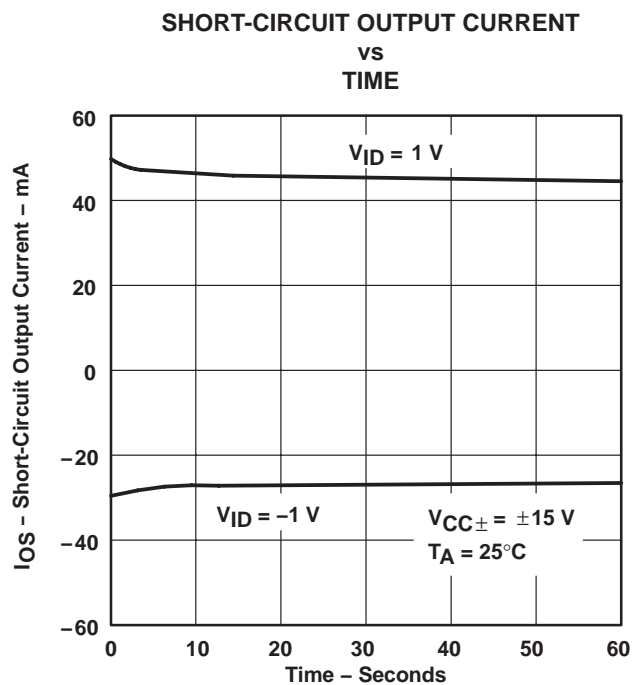
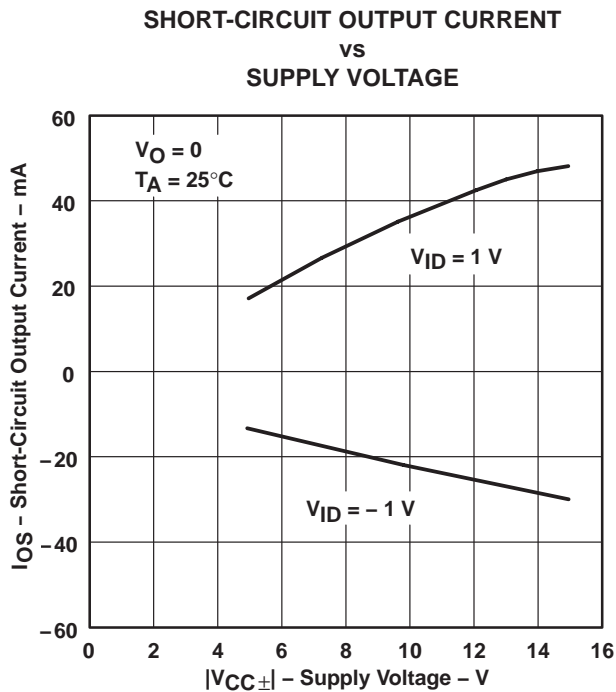


Figure 25

† Data at high and low temperatures are applicable within the rated operating free-air temperature ranges of the various devices.

TYPICAL CHARACTERISTICS†



† Data at high and low temperatures are applicable within the rated operating free-air temperature ranges of the various devices.

TL087, TL088, TL287, TL288 JFET-INPUT OPERATIONAL AMPLIFIERS

SLOS082B – MARCH 1979 – REVISED – JULY 2004

TYPICAL CHARACTERISTICS†

SUPPLY CURRENT
vs
SUPPLY VOLTAGE

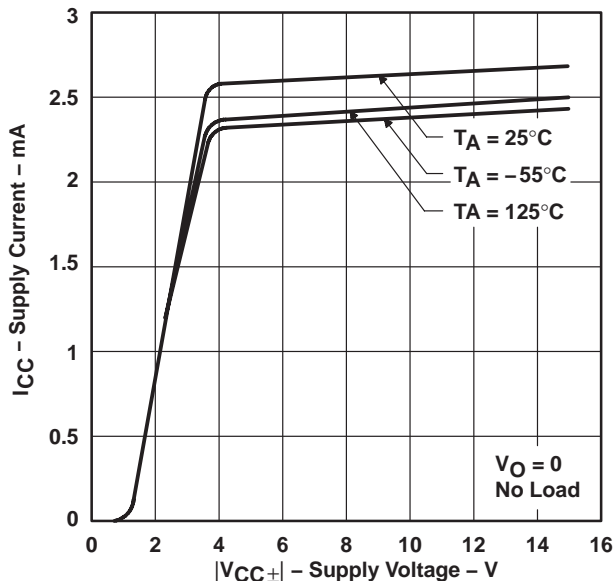


Figure 29

SUPPLY CURRENT
vs
FREE-AIR TEMPERATURE

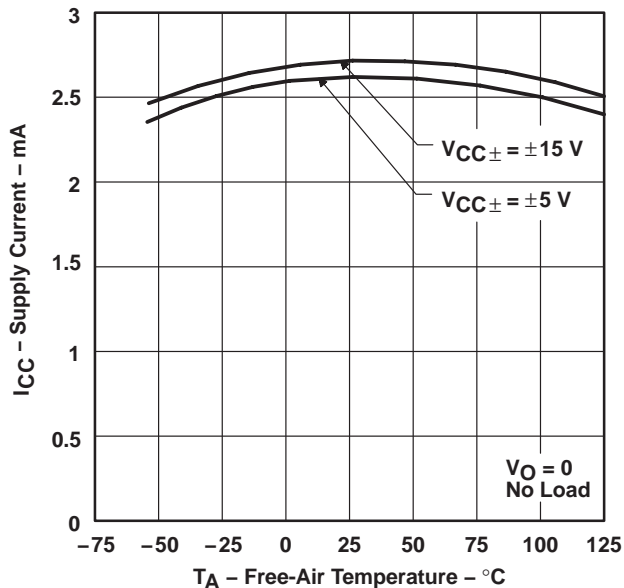


Figure 30

SLEW RATE
vs
LOAD RESISTANCE

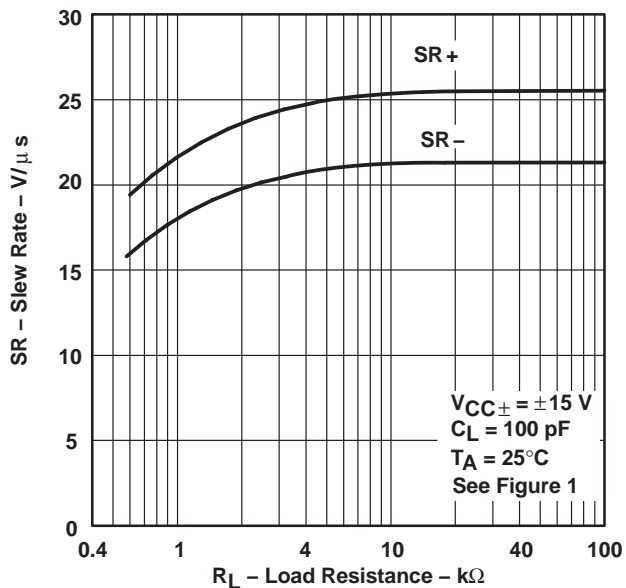


Figure 31

SLEW RATE
vs
FREE-AIR TEMPERATURE

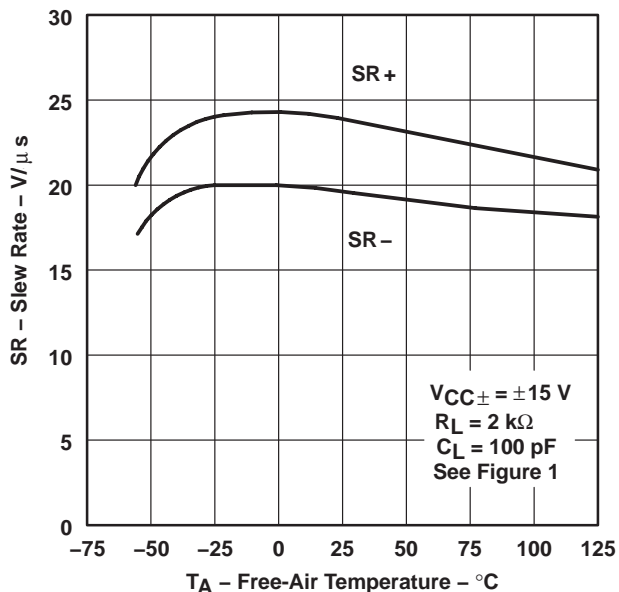
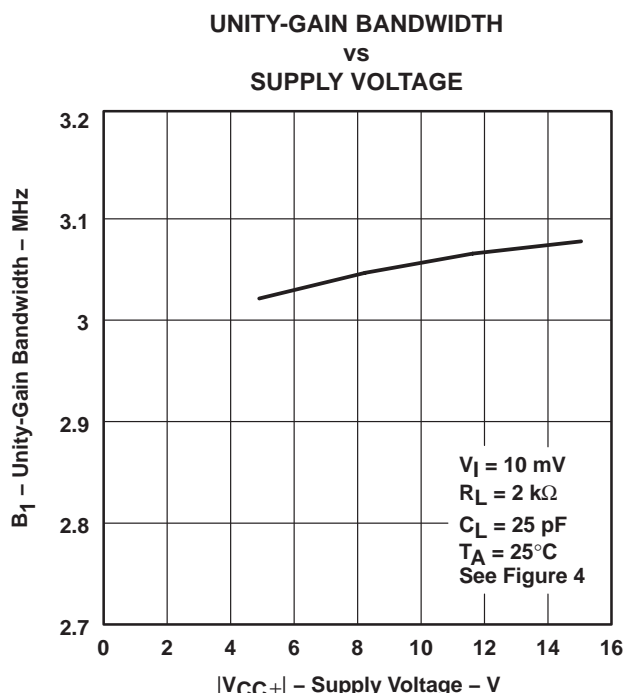
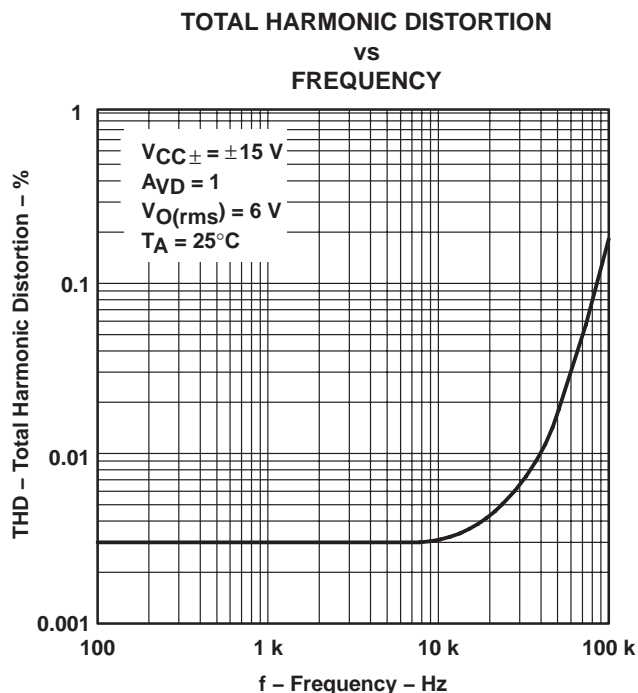
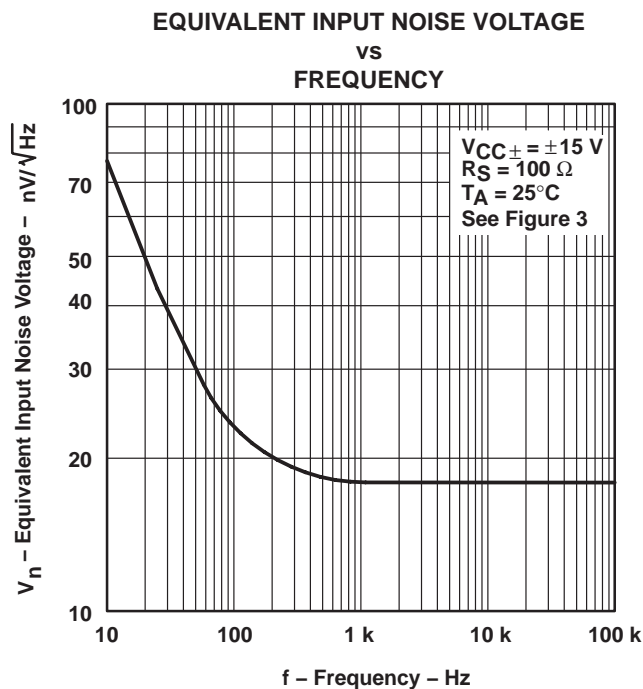
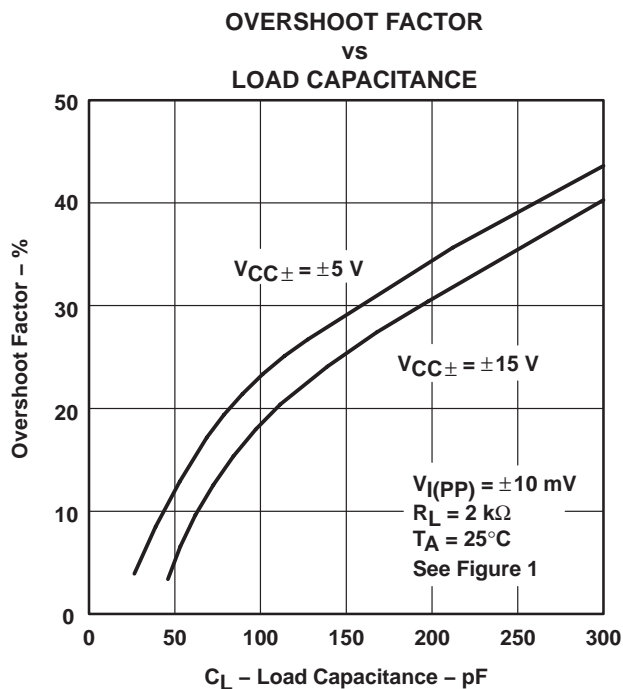


Figure 32

† Data at high and low temperatures are applicable within the rated operating free-air temperature ranges of the various devices.

TYPICAL CHARACTERISTICS†

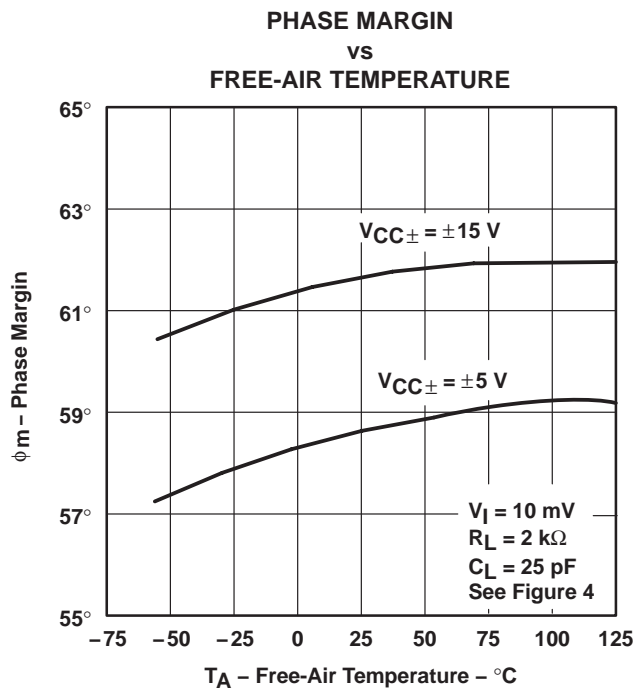
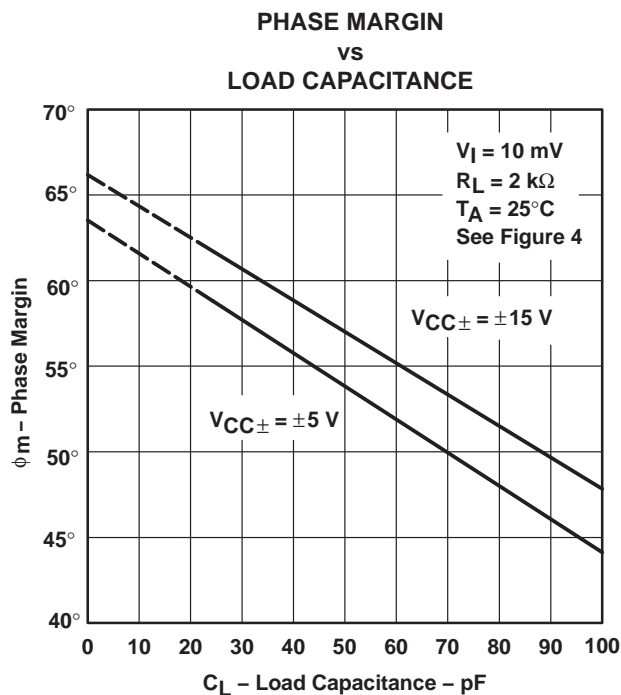
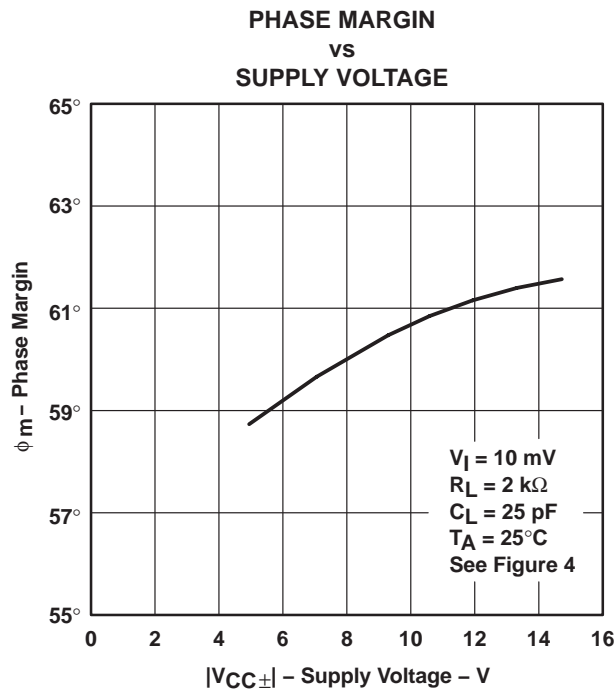
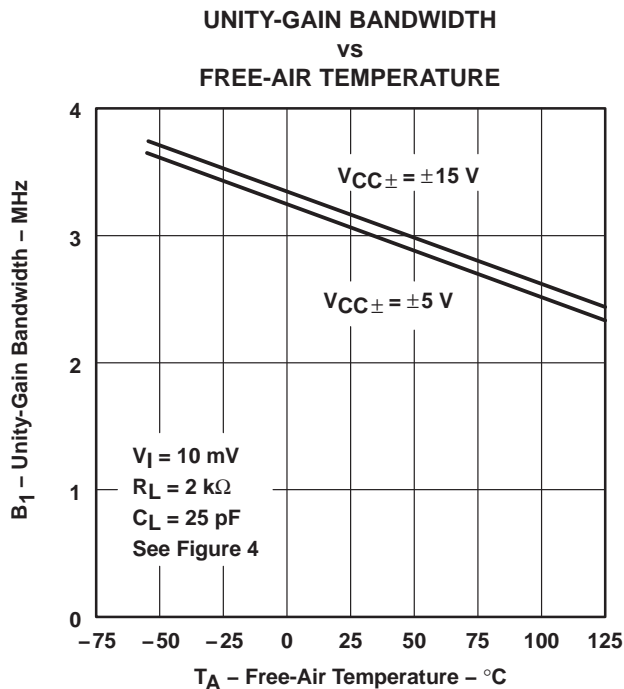


† Data at high and low temperatures are applicable within the rated operating free-air temperature ranges of the various devices.

TL087, TL088, TL287, TL288 JFET-INPUT OPERATIONAL AMPLIFIERS

SLOS082B – MARCH 1979 – REVISED – JULY 2004

TYPICAL CHARACTERISTICS†



† Data at high and low temperatures are applicable within the rated operating free-air temperature ranges of the various devices.

TYPICAL CHARACTERISTICS

VOLTAGE-FOLLOWER
SMALL-SIGNAL
PULSE RESPONSE

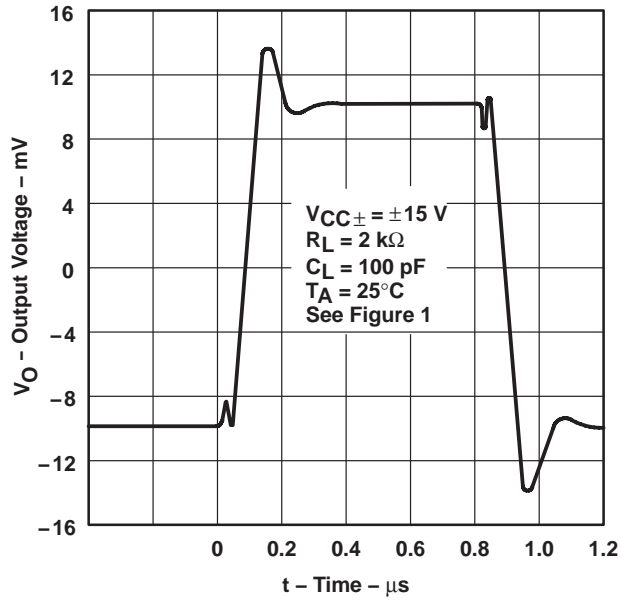


Figure 41

VOLTAGE-FOLLOWER
LARGE-SIGNAL
PULSE RESPONSE

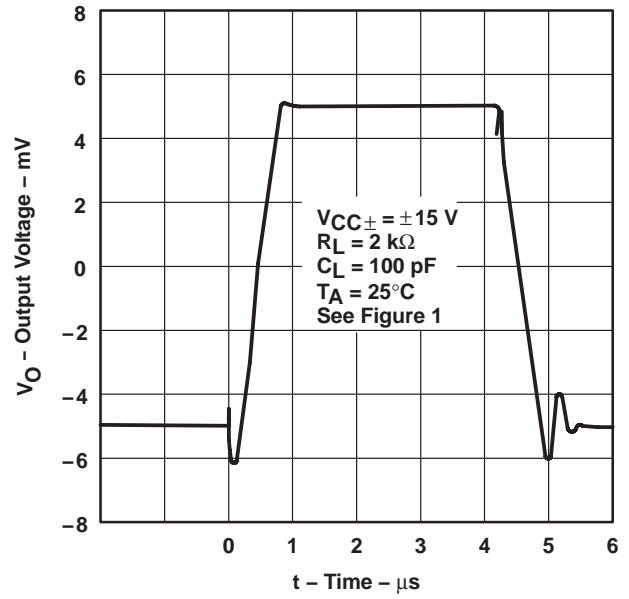


Figure 42

TL087, TL088, TL287, TL288 JFET-INPUT OPERATIONAL AMPLIFIERS

SLOS082B – MARCH 1979 – REVISED – JULY 2004

TYPICAL APPLICATION DATA

output characteristics

All operating characteristics are specified with 100-pF load capacitance. These amplifiers will drive higher capacitive loads; however, as the load capacitance increases, the resulting response pole occurs at lower frequencies, causing ringing, peaking, or even oscillation. The value of the load capacitance at which oscillation occurs varies with production lots. If an application appears to be sensitive to oscillation due to load capacitance, adding a small resistance in series with the load should alleviate the problem. Capacitive loads of 1000 pF, and larger, may be driven if enough resistance is added in series with the output (see Figure 43).

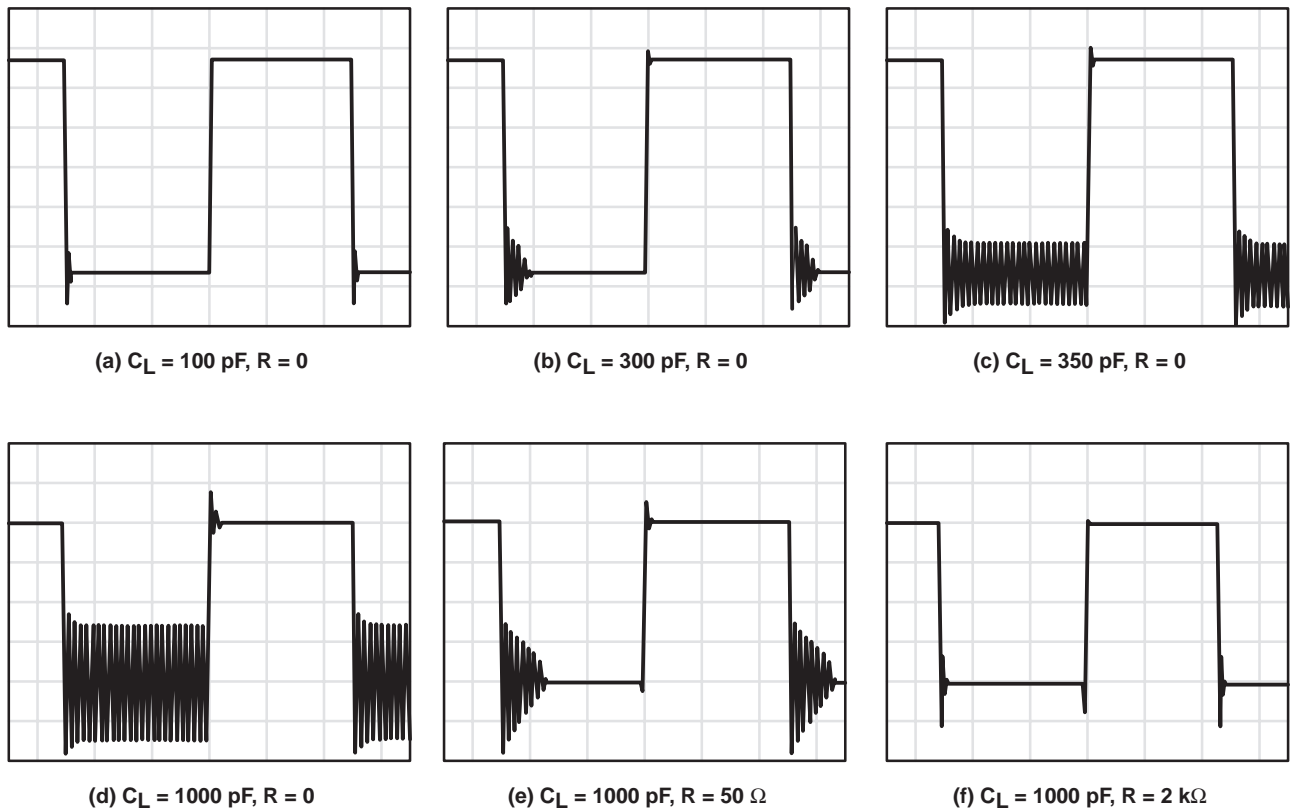


Figure 43. Effect of Capacitive Loads

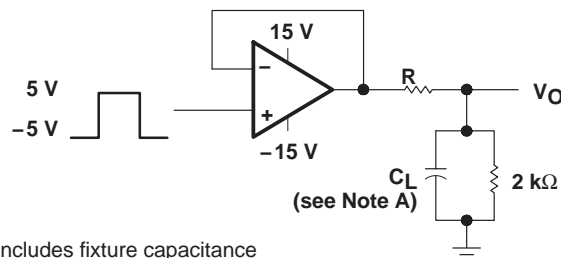


Figure 44. Test Circuit for Output Characteristics

TYPICAL APPLICATION DATA

input characteristics

These amplifiers are specified with a minimum and a maximum input voltage that, if exceeded at either input, could cause the device to malfunction.

Because of the extremely high input impedance and resulting low bias current requirements, these amplifiers are well suited for low-level signal processing; however, leakage currents on printed circuit boards and sockets easily can exceed bias current requirements and cause degradation in system performance. It is good practice to include guard rings around inputs (see Figure 45). These guards should be driven from a low-impedance source at the same voltage level as the common-mode input.

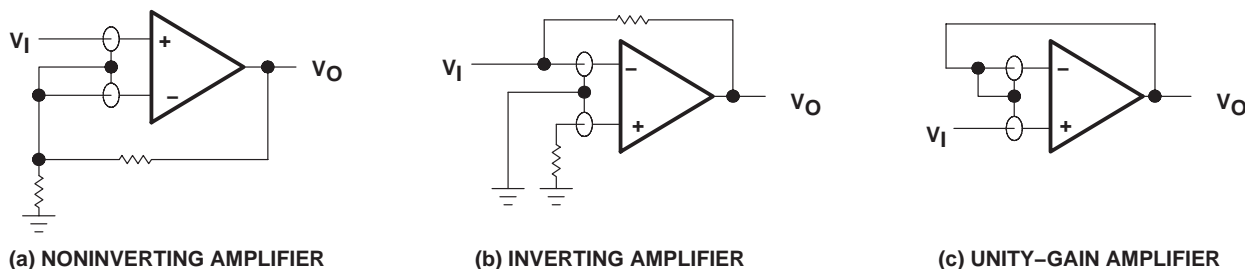


Figure 45. Use of Guard Rings

noise performance

The noise specifications in operational amplifier circuits are greatly dependent on the current in the first-stage differential amplifier. The low input bias current requirements of these amplifiers result in a very low current noise. This feature makes the devices especially favorable over bipolar devices when using values of circuit impedance greater than 50 kΩ.

PACKAGING INFORMATION

Orderable Device	Status ⁽¹⁾	Package Type	Package Drawing	Pins	Package Qty	Eco Plan ⁽²⁾	Lead/Ball Finish	MSL Peak Temp ⁽³⁾
TL288CP	ACTIVE	PDIP	P	8	50	Pb-Free (RoHS)	CU NIPDAU	N / A for Pkg Type
TL288CPE4	ACTIVE	PDIP	P	8	50	Pb-Free (RoHS)	CU NIPDAU	N / A for Pkg Type

⁽¹⁾ The marketing status values are defined as follows:

ACTIVE: Product device recommended for new designs.

LIFEBUY: TI has announced that the device will be discontinued, and a lifetime-buy period is in effect.

NRND: Not recommended for new designs. Device is in production to support existing customers, but TI does not recommend using this part in a new design.

PREVIEW: Device has been announced but is not in production. Samples may or may not be available.

OBsolete: TI has discontinued the production of the device.

⁽²⁾ Eco Plan - The planned eco-friendly classification: Pb-Free (RoHS), Pb-Free (RoHS Exempt), or Green (RoHS & no Sb/Br) - please check <http://www.ti.com/productcontent> for the latest availability information and additional product content details.

TBD: The Pb-Free/Green conversion plan has not been defined.

Pb-Free (RoHS): TI's terms "Lead-Free" or "Pb-Free" mean semiconductor products that are compatible with the current RoHS requirements for all 6 substances, including the requirement that lead not exceed 0.1% by weight in homogeneous materials. Where designed to be soldered at high temperatures, TI Pb-Free products are suitable for use in specified lead-free processes.

Pb-Free (RoHS Exempt): This component has a RoHS exemption for either 1) lead-based flip-chip solder bumps used between the die and package, or 2) lead-based die adhesive used between the die and leadframe. The component is otherwise considered Pb-Free (RoHS compatible) as defined above.

Green (RoHS & no Sb/Br): TI defines "Green" to mean Pb-Free (RoHS compatible), and free of Bromine (Br) and Antimony (Sb) based flame retardants (Br or Sb do not exceed 0.1% by weight in homogeneous material)

⁽³⁾ MSL, Peak Temp. -- The Moisture Sensitivity Level rating according to the JEDEC industry standard classifications, and peak solder temperature.

Important Information and Disclaimer:The information provided on this page represents TI's knowledge and belief as of the date that it is provided. TI bases its knowledge and belief on information provided by third parties, and makes no representation or warranty as to the accuracy of such information. Efforts are underway to better integrate information from third parties. TI has taken and continues to take reasonable steps to provide representative and accurate information but may not have conducted destructive testing or chemical analysis on incoming materials and chemicals. TI and TI suppliers consider certain information to be proprietary, and thus CAS numbers and other limited information may not be available for release.

In no event shall TI's liability arising out of such information exceed the total purchase price of the TI part(s) at issue in this document sold by TI to Customer on an annual basis.

P (R-PDIP-T8)

PLASTIC DUAL-IN-LINE



- NOTES: A. All linear dimensions are in inches (millimeters).
 B. This drawing is subject to change without notice.
 C. Falls within JEDEC MS-001

For the latest package information, go to http://www.ti.com/sc/docs/package/pkg_info.htm

IMPORTANT NOTICE

Texas Instruments Incorporated and its subsidiaries (TI) reserve the right to make corrections, modifications, enhancements, improvements, and other changes to its products and services at any time and to discontinue any product or service without notice. Customers should obtain the latest relevant information before placing orders and should verify that such information is current and complete. All products are sold subject to TI's terms and conditions of sale supplied at the time of order acknowledgment.

TI warrants performance of its hardware products to the specifications applicable at the time of sale in accordance with TI's standard warranty. Testing and other quality control techniques are used to the extent TI deems necessary to support this warranty. Except where mandated by government requirements, testing of all parameters of each product is not necessarily performed.

TI assumes no liability for applications assistance or customer product design. Customers are responsible for their products and applications using TI components. To minimize the risks associated with customer products and applications, customers should provide adequate design and operating safeguards.

TI does not warrant or represent that any license, either express or implied, is granted under any TI patent right, copyright, mask work right, or other TI intellectual property right relating to any combination, machine, or process in which TI products or services are used. Information published by TI regarding third-party products or services does not constitute a license from TI to use such products or services or a warranty or endorsement thereof. Use of such information may require a license from a third party under the patents or other intellectual property of the third party, or a license from TI under the patents or other intellectual property of TI.

Reproduction of TI information in TI data books or data sheets is permissible only if reproduction is without alteration and is accompanied by all associated warranties, conditions, limitations, and notices. Reproduction of this information with alteration is an unfair and deceptive business practice. TI is not responsible or liable for such altered documentation. Information of third parties may be subject to additional restrictions.

Resale of TI products or services with statements different from or beyond the parameters stated by TI for that product or service voids all express and any implied warranties for the associated TI product or service and is an unfair and deceptive business practice. TI is not responsible or liable for any such statements.

TI products are not authorized for use in safety-critical applications (such as life support) where a failure of the TI product would reasonably be expected to cause severe personal injury or death, unless officers of the parties have executed an agreement specifically governing such use. Buyers represent that they have all necessary expertise in the safety and regulatory ramifications of their applications, and acknowledge and agree that they are solely responsible for all legal, regulatory and safety-related requirements concerning their products and any use of TI products in such safety-critical applications, notwithstanding any applications-related information or support that may be provided by TI. Further, Buyers must fully indemnify TI and its representatives against any damages arising out of the use of TI products in such safety-critical applications.

TI products are neither designed nor intended for use in military/aerospace applications or environments unless the TI products are specifically designated by TI as military-grade or "enhanced plastic." Only products designated by TI as military-grade meet military specifications. Buyers acknowledge and agree that any such use of TI products which TI has not designated as military-grade is solely at the Buyer's risk, and that they are solely responsible for compliance with all legal and regulatory requirements in connection with such use.

TI products are neither designed nor intended for use in automotive applications or environments unless the specific TI products are designated by TI as compliant with ISO/TS 16949 requirements. Buyers acknowledge and agree that, if they use any non-designated products in automotive applications, TI will not be responsible for any failure to meet such requirements.

Following are URLs where you can obtain information on other Texas Instruments products and application solutions:

Products

Amplifiers	amplifier.ti.com
Data Converters	dataconverter.ti.com
DSP	dsp.ti.com
Clocks and Timers	www.ti.com/clocks
Interface	interface.ti.com
Logic	logic.ti.com
Power Mgmt	power.ti.com
Microcontrollers	microcontroller.ti.com
RFID	www.ti-rfid.com
RF/IF and ZigBee® Solutions	www.ti.com/lprf

Applications

Audio	www.ti.com/audio
Automotive	www.ti.com/automotive
Broadband	www.ti.com/broadband
Digital Control	www.ti.com/digitalcontrol
Medical	www.ti.com/medical
Military	www.ti.com/military
Optical Networking	www.ti.com/opticalnetwork
Security	www.ti.com/security
Telephony	www.ti.com/telephony
Video & Imaging	www.ti.com/video
Wireless	www.ti.com/wireless

Mailing Address: Texas Instruments, Post Office Box 655303, Dallas, Texas 75265
Copyright © 2008, Texas Instruments Incorporated